

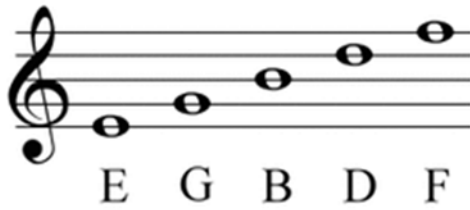


Teaching a Computer to Sing

University of Massachusetts Lowell
Bartlett Community Partnership School



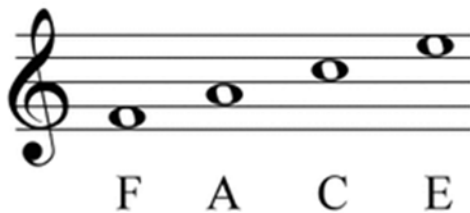
NOTES ON THE STAFF



The musical alphabet uses seven letters:
A B C D E F G

After G you start over again at A.

The notes on the staff are on a line or in a space.

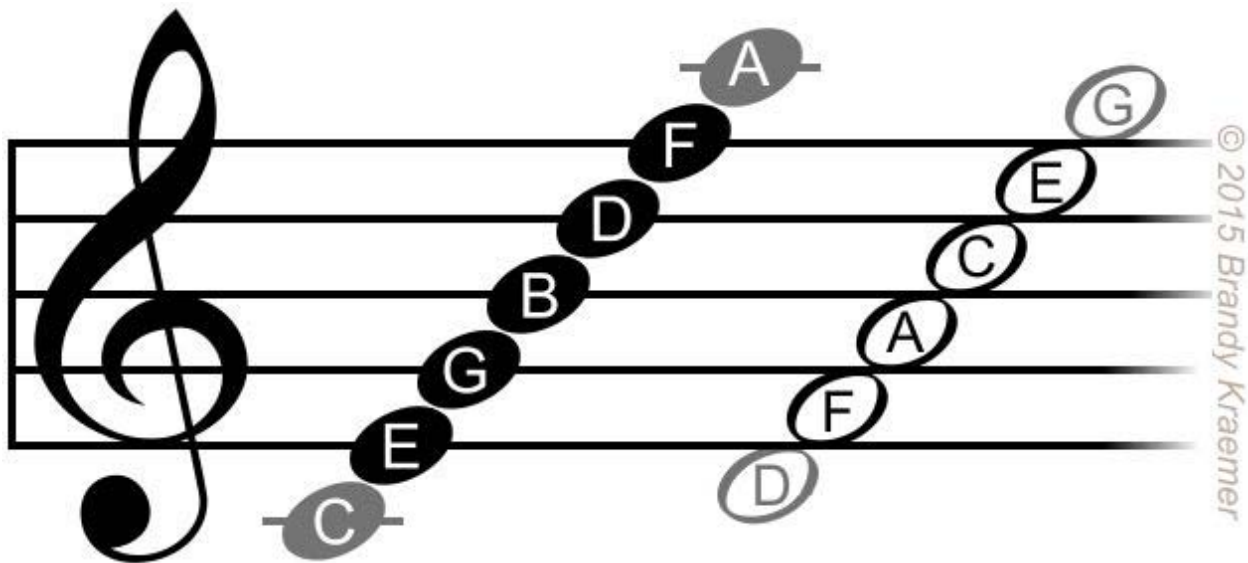


Remember the line notes by the saying:

Every Good Burger Deserves Fries

Remember the space notes by spelling out:

F-A-C-E



Sources:

- <http://musicsmithehb.weebly.com/notes-on-the-staff.html>
- http://f.tqn.com/y/piano/1/S/G/f/-/-/Treble-notes_Grand-Staff.png